

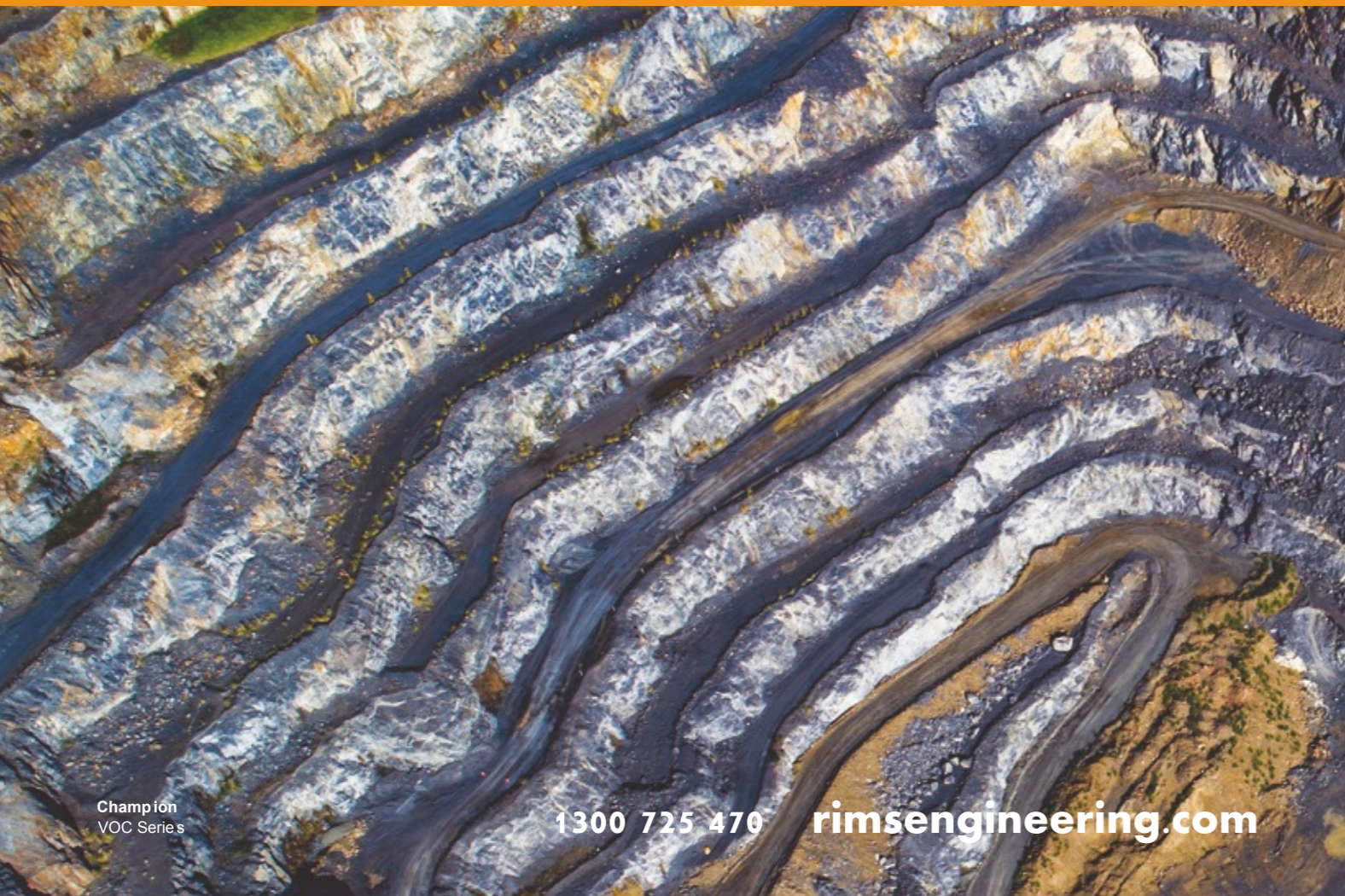
# THE VOC SERIES

Designed and engineered in Australia, for more than 50 years Australian businesses have relied on Champion compressors to perform in the most demanding conditions on the planet.

**Less downtime and more energy efficiency means you save money. And with the confidence that your day-to-day operations are under control, you can cast your mind to tomorrow's targets.**

From the extreme heat of the far North to the colder climes of the South, Australian

communities are as diverse as the industries that support them. That's why our heavy-duty Champion compressors are fully customisable. Quiet and compact, we'll fit within your space and budget requirements. And with all our genuine parts engineered for durability, we guarantee every Champion compressor will deliver a lifetime of tough performance, wherever you are.



# VOC SERIES BENEFITS



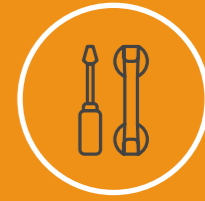
Meets OH&S standards with full guarding of moving parts and quiet operation



Space saving design for a smaller footprint



Hassle-free service with an easy-access enclosure



Built for easy servicing, with full factory warranty and genuine parts



Keeping things cool on the inside, even when it's 50°C outside



Keeping torque up and temperatures down for maximum efficiency



Unmatched productivity, longevity and safety – standard features of a Champion



Everyday quiet achieves for maximum air



Customisable with features including dirty environment packs, outdoor option and modulating control and stainless steel panels



Ensures a clean operating environment with oil emissions below 2–3 ppm

# OUR POINT OF DIFFERENCE



## Customer support

### FULL SUPPORT, NO WORRIES

**When you buy a Sullair compressor, you're not just buying a compressor.**

You're buying the peace of mind that comes with a national support team, including seven local offices, GPS-tracked mobile service vans, instructor-led and online training, plus the expertise of our technicians, who are factory trained using the latest tools and diagnostic techniques to ensure the optimum service of your compressor. So if anything ever goes wrong, or if you simply want to make sure that you're getting the most out of your compressor, just call **1300 725 470**. We've got you covered.



## Reduced life cycle costs

### DRIVING PRODUCTIVITY UP, AND ENERGY COSTS DOWN

**We know energy efficiency is important to you; it's important to us, too.**

Compressed air systems now make up 10 per cent of total industrial electricity use in Australia, and the cost of electricity continues to rise.

And that's not all: nearly 75 per cent of the life-cycle cost of an air compressor is energy. This is why we've designed our Sullair compressors and air ends to deliver optimum efficiency over their life cycle.



## Lowest lifetime cost

### RELAX, WE'VE GOT IT COVERED FOR A DECADE

**Your business is here for the long haul, and so are our compressors.**

Champion brand products come with an (optional) 5-year or 10-year extended warranty, giving them the lowest lifetime cost – and probably the greatest peace of mind – of any compressor around.



## Powerful air

### AIR POWER TO MATCH EVERY TASK, EVERY TIME

**You can be rest assured that our tools are always up to the task.**

Our Champion VOC/ VSD series compressors are built to be relentless performers from 45 to 250kW. With an impressive free-air delivery range – 111 l/s (236 cfm) up to 729 l/s (1544 cfm) pressure variants from 7.5 bar to 13 bar – and the renowned Sullair Air End reliability, you've got a powerful partner in any task for years to come.



## Maximum efficiency

### MAXIMUM AIR, MINIMUM ENERGY

**Sometimes the design features that leave the greatest impacts are the things we don't see.**

By putting energy efficiency at the forefront of every engineering decision we make, we ensure all Champion products minimise power consumption.

And by helping keep energy bills down, we know our smarter technologies give businesses a competitive edge.

# THE VOC SERIES

The Sullair VOC (Variable Output Control) range of compressors are designed to shrink your energy costs without compromising on performance.

A large, slow-running air end maintains constant pressure, but requires surprisingly little power to run.

Available in a range of models from 45kW up to 250kW output, the right VOC compressor will lower running costs for years to come, backed by an optional warranty of up to ten years.



# THE VOC VSD SERIES

Combining the energy efficient high turndown Variable Speed Drive (VSD) with the Variable Output Control (VOC) spiral valve, this range delivers maximum performance.

Unlike standard on/off load compressors, which create swings in pressure, wasted energy and high wear and tear, these models deliver stable, reliable pressure at lower operating temperatures with Optimal Flux Technology.

That's good news for the environment – and good news for your bottom line. And if a fault ever occurs, there's minimal fuss – just call the Sullair customer service team to get it sorted out.



## TECHNICAL SPECIFICATIONS

MODEL	MAX PRESSURE		CAPACITY - FREE AIR DELIVERY			MOTOR RATING		NOISE LEVEL DB (A)	DIMENSIONS D x W x H (mm)	APPROX WEIGHT kg	AIR OUTLET DISCHARGE SIZE
	PSI	BAR	L/S	M <sup>3</sup> /MIN	CFM	KW	HP				
VOC 45	109 145	7.5 10	141 111	8.5 6.7	300 236	45	60	68	1995 x 1300 x 1970	2075	2" BSPF
VOC 55	109 145 188	7.5 10.0 13.0	168 141 111	10.1 8.5 6.7	355 300 236	55	75	68	1995 x 1300 x 1970	2075	2" BSPF
VOC 75	109 145 188	7.5 10.0 13.0	236 202 174	14.2 12.1 10.4	500 428 368	75	100	73	1995 x 1300 x 1970	2075	2" BSPF
VOC 90	109 145 188	7.5 10.0 13.0	279 239 206	16.7 14.3 12.4	591 505 437	90	125	73	1995 x 1300 x 1970	2200	2" BSPF
VOC 110	109 145 188	7.5 10.0 13.0	338 293 250	20.3 17.3 15.0	717 621 530	110	150	76	1825 x 2730 x 2160	3280	80 NB (3") ANSI 150 FLANGE
VOC 132	109 145 188	7.5 10.0 13.0	398 312 272	23.9 18.7 16.3	843 660 577	132	175	76	1825 x 2730 x 2160	3645	80 NB (3") ANSI 150 FLANGE
VOC 160	109 145 188	7.5 10.0 13.0	469 391 314	28.1 23.5 18.8	993 828 665	160	215	77	1825 x 2730 x 2160	3650	80 NB (3") ANSI 150 FLANGE
VOC 185	109 145 188	7.5 10.0 13.0	517 451 388	31.0 27.1 23.3	1095 955 823	185	250	79	1825 x 2730 x 2160	3690	80 NB (3") ANSI 150 FLANGE
VOC 250	109 145	7.5 10.0	729 652	43.7 39.1	1544 1381	250	335	78	1780 x 5190 x 2165	6000	100 NB (4") ANSI 150 FLANGE

## TECHNICAL SPECIFICATIONS

MODEL	MAX PRESSURE		CAPACITY - FREE AIR DELIVERY			MOTOR RATING		NOISE LEVEL DB (A)	DIMENSIONS D x W x H (mm)	APPROX WEIGHT kg	AIR OUTLET DISCHARGE SIZE
	PSI	BAR	L/S	M <sup>3</sup> /MIN	CFM	KW	HP				
VOC 45 VSD	109 145	7.5 10	141 111	8.5 6.7	300 236	45	60	68	2125 x 1300 x 2020	2175	2" BSPF
VOC 55 VSD	109 145 188	7.5 10.0 13.0	168 141 111	10.1 8.5 6.7	355 300 236	55	75	68	2125 x 1300 x 2020	2140	2" BSPF
VOC 75 VSD	109 145 188	7.5 10.0 13.0	236 202 174	14.2 12.1 10.4	500 428 368	75	100	73	2125 x 1350 x 2020	2175	2" BSPF
VOC 90 VSD	109 145 188	7.5 10.0 13.0	279 239 206	16.7 14.3 12.4	591 505 437	90	125	73	2125 x 1330 x 2020	2300	2" BSPF
VOC 110 VSD	109 145 188	7.5 10.0 13.0	338 293 250	20.3 17.3 15.0	717 621 530	110	150	76	1825 x 2730 x 2110	3480	80 NB (3") ANSI 150 FLANGE
VOC 132 VSD	109 145 188	7.5 10.0 13.0	398 312 272	23.9 18.7 16.3	845 663 578	132	175	76	1825 x 2730 x 2110	3845	80 NB (3") ANSI 150 FLANGE
VOC 160 VSD	109 145 188	7.5 10.0 13.0	469 391 314	28.1 23.5 18.8	996 830 667	160	215	77	1825 x 2730 x 2110	3950	80 NB (3") ANSI 150 FLANGE
VOC 185 VSD	109 145 188	7.5 10.0 13.0	517 451 388	31.0 27.1 23.3	1098 958 824	185	250	79	1825 x 2730 x 2110	3970	80 NB (3") ANSI 150 FLANGE
VOC 250 VSD	109 145	7.5 10	729 652	43.7 39.1	1544 1381	250	335	78	1780 x 5185 x 2110	6300	100 NB (4") ANSI 150 FLANGE